



# Exceptional weather events

**Type of event:**

**Rain & tidal flooding**

**Date:**

**February 2002**



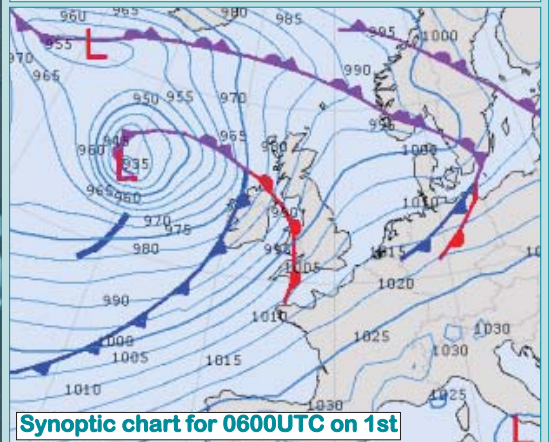
*The month began with wet and stormy conditions on the 1st, while exceptionally high tides led to coastal flooding in many areas, as here in Cork - see also page 2. (picture Evening Echo)*

**Summary:** Apart from a short spell of dry weather around mid-month, February 2002 was a very unsettled month, with Atlantic depressions over or near the country bringing frequent rain and gales. Rainfall totals were over twice the monthly normal except in the south of the country and it was the wettest February at many stations for between 12 and 25 years, while at Casement Aerodrome it was the wettest February since records began there in 1964. This rain led to flooding in many areas, while on the 1st there was severe coastal flooding in places due to a combination of factors, including some heavy rain and gales

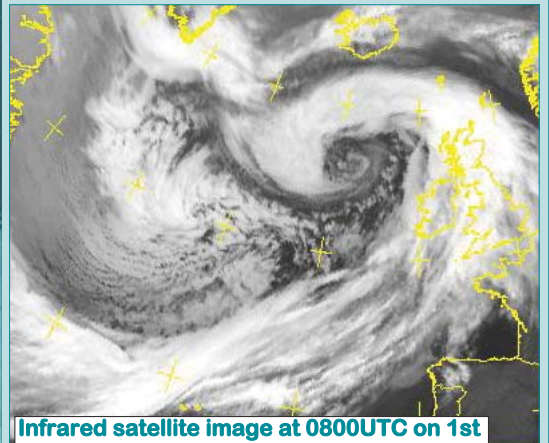
and most significantly a depression of central pressure 930hPa to the northwest of Ireland, which greatly enhanced an already higher than normal tide (*see page 2*).

# Severe coastal flooding on 1st

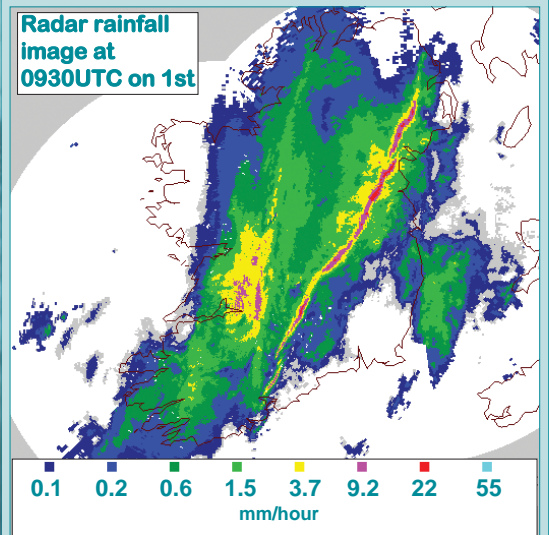
After several days of stormy weather caused by areas of low pressure near Ireland, a very deep depression of central pressure 930hPa passed to the northwest of the country on the 1st. Bands of heavy thundery rain, together with southwesterly gales, affected most parts of the country during the day. Most disruption, however, was caused by the exceptionally high tides measured around many coasts, especially in the Irish Sea. The worst affected area was Dublin, shown left, where severe flooding occurred after the highest tide measured for over eighty years caused sea defences to fail and led to rivers and canals overflowing in parts of the city. (picture Irish Times)



Synoptic chart for 0600UTC on 1st



Infrared satellite image at 0800UTC on 1st



Radar rainfall image at 0930UTC on 1st