



# Monthly Weather Summary

## The Weather of June 2007

### **Very wet in east and south; warmest and sunniest in west**

Despite a week of dry, warm and very sunny weather everywhere between the 4th and 11th, June overall was a very wet month in most places with sunshine totals below normal, while mean temperatures were highest in western areas. More than twice the normal June rainfall was recorded in the east and south, while at Kilkenny it was the wettest June since records began there in 1957, with more than three times its average total recorded. Heavy daily falls, some in association with thunder, led to localised flooding on a number of days. Kilkenny's fall of 31mm on the 15th was its highest on record for June, while Dublin (Phoenix Park)'s daily fall of 53mm on the 22nd included a 90-minute fall of 26mm during a thunderstorm. Mullingar recorded a 60-minute fall of 29mm on the 13th; such an event would be expected only once every 50 years. There were 10 wetdays during the month at Malin Head (days with 1mm or more rainfall), but the majority of stations recorded between 13 and 19 wetdays, compared with the normal range for June of between 11 and 14. Mean monthly air temperatures varied between 13°C and 15°C and were around a degree higher than normal generally. The first half of the month was warm, especially in the west, but temperatures were near or below normal throughout most of the second half. Daytime temperatures rose above 20°C each day in many midland and western areas during the period 5th to 12th; Belmullet's mean temperature for the month of 14.6°C was its highest for June since records began there in 1956. In contrast, cold nights near the end of the month allowed ground frost to develop at Mullingar. Sunshine totals were very variable across the country, with highest totals measured in the north and west; while it was the sunniest June at Malin Head since 1996, it was the dullest at several other stations for between 5 and 10 years.

**1st to 3rd:** Slow-moving bands of rain over Ireland brought very heavy falls in places, particularly to western areas on the 2nd and to the eastern half of the country on the 3rd. Temperatures were near or above normal, with long sunny spells in places on the 1st and 3rd. South to southwesterly winds were strong in western areas on the 2nd.

**4th to 11th:** High pressure centred north of Ireland was the dominant influence, bringing dry and clear weather to all areas. Temperatures rose well above normal in the western half of the country, but the prevailing easterly breeze kept daytime values closer to normal in eastern areas. Long sunny spells developed each day after early mist or fog had cleared, with more than 15 hours of daily sunshine in places between the 4th and 7th.

**12th to 30th:** A succession of slow-moving depressions moved eastwards across the south of the country. Associated frontal systems brought rain or showers each day, with some locally very heavy and thundery downpours. A tornado was observed near Galtymore, Co. Tipperary, on the 24th, but no damage was recorded. The heaviest rain was recorded in the periods 13th to 15th and 18th to 22nd and on the 24th and 30th, bringing localised flooding. Little sunshine was recorded on most days and temperatures were near or below normal for most of the period. Mainly easterly winds at first later backed to a northerly direction, before very mild southerly winds became established at the end of the month.

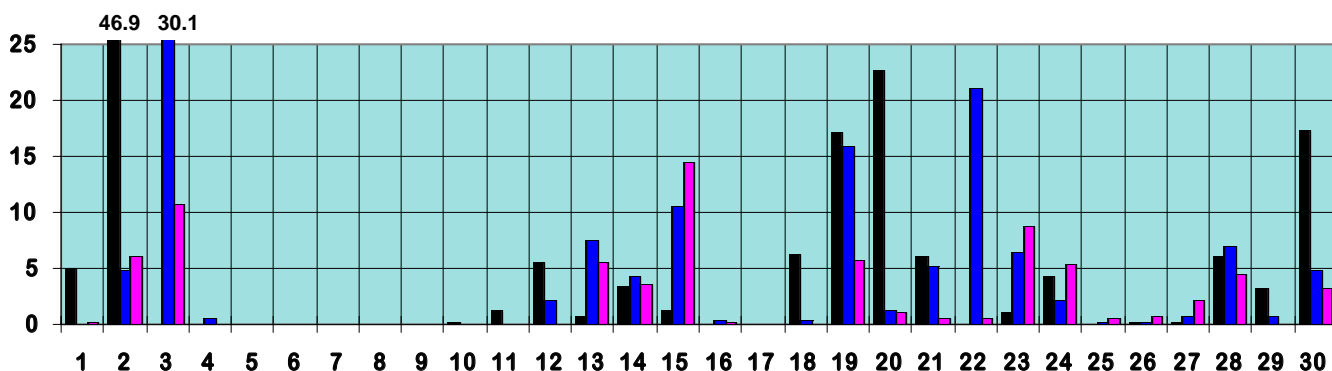
**Wind and elements:** Mean windspeeds for the month were below normal, varying between 6 and 10 knots (11 and 19km/hr) generally. The highest gust, 42 knots (78km/hr), was measured at Malin Head on both the 14th and 15th. Thunderstorms were recorded in the period 11th to 15th and on the 19th, 20th, 22nd, 24th and 30th; they were most widespread on the 12th and 13th. Fog was widespread during the first nine days of the month.

### **Extreme values**

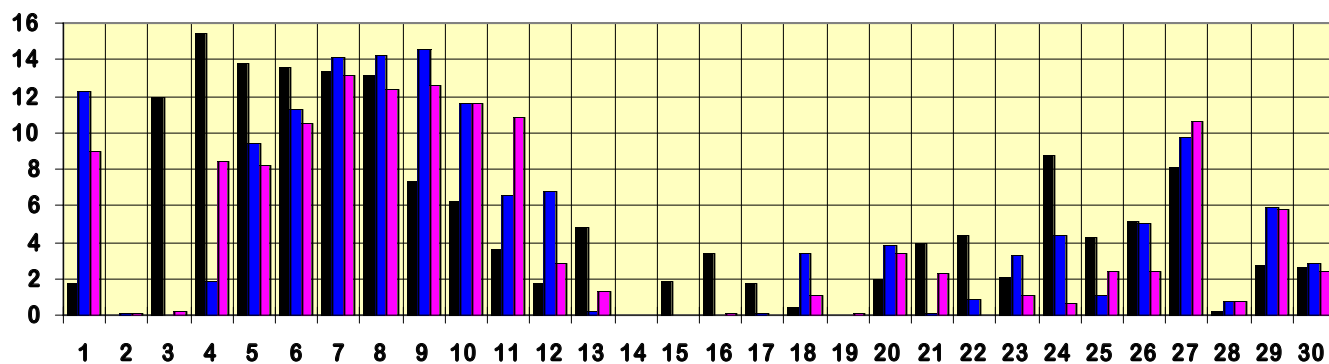
<b>Rainfall</b>	Highest total: 171.5mm at Dublin (Phoenix Park) ( <i>its wettest June since 1958</i> ) Lowest total: 71.5mm at Belmullet Highest daily rainfall: 53.4mm at Dublin (Phoenix Park) on 22nd ( <i>its highest daily value for June since 1993</i> )
<b>Temperature</b>	Highest mean monthly temperature: 15.2°C at Shannon Airport Lowest mean monthly temperature: 13.1°C at Dublin Airport Highest temperature: 25.9°C at Clones on 11th Lowest air temperature: 3.8°C at Mullingar on 27th and 28th Lowest grass minimum temperature: -0.7°C at Mullingar on 28th
<b>Sunshine</b>	Highest monthly total: 206 hours at Belmullet Lowest monthly total: 126 hours at Kilkenny ( <i>its dullest June since 1993</i> ) Highest daily sunshine: 15.6 hours at Knock Airport on 4th and Malin Head on 6th

# June 2007 Daily values at selected synoptic stations

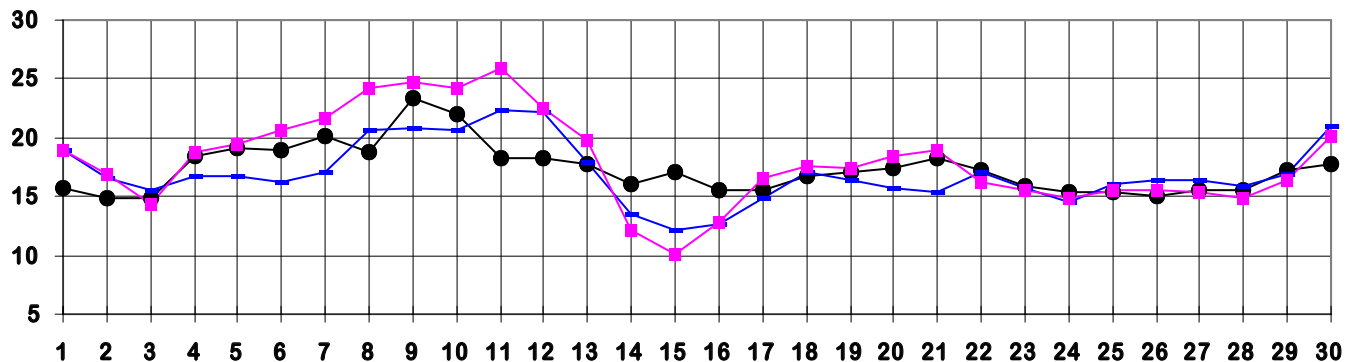
## Rainfall (mm)



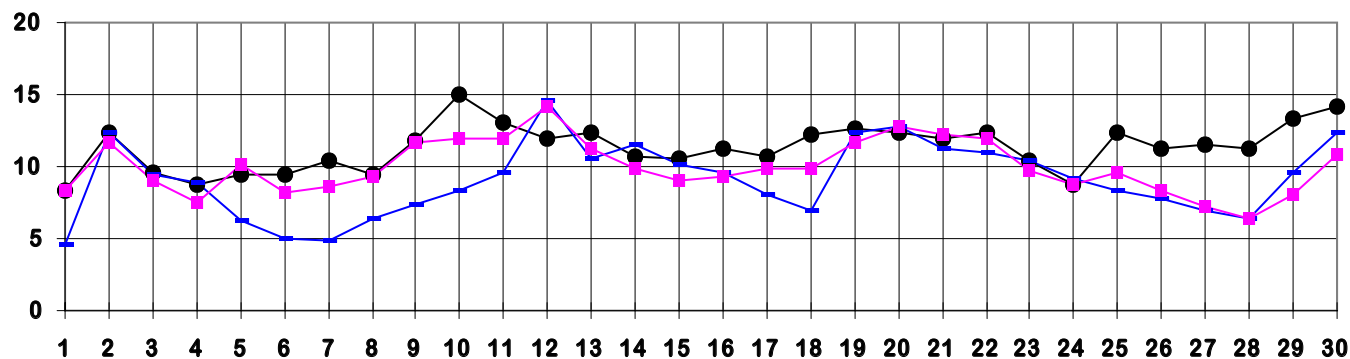
## Sunshine (hours)



## Maximum temperature (°C)



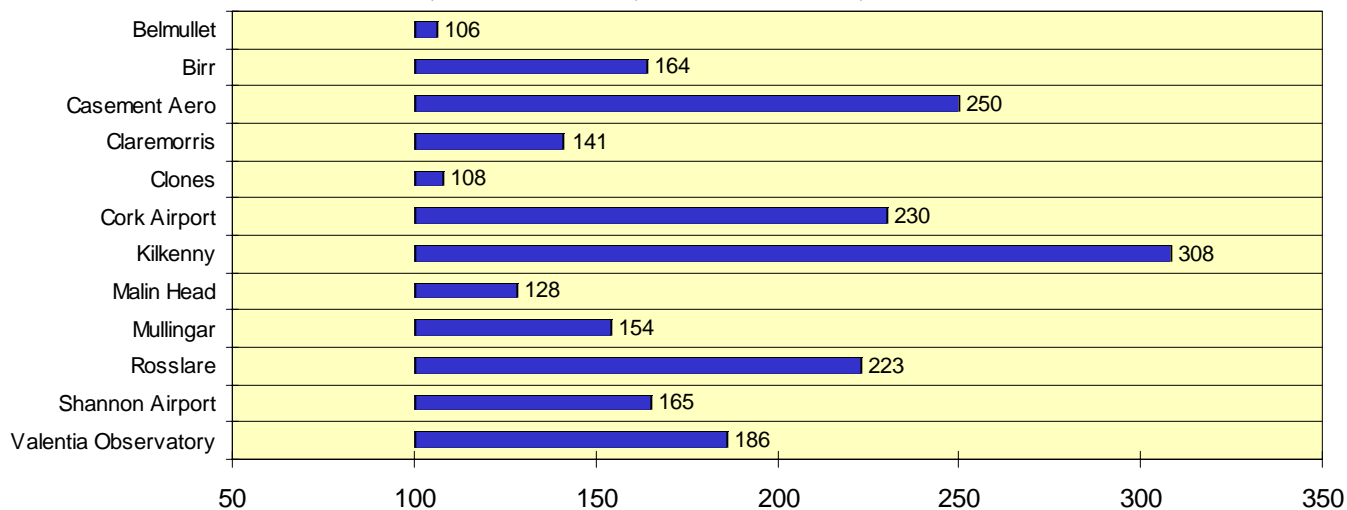
## Minimum temperature (°C)



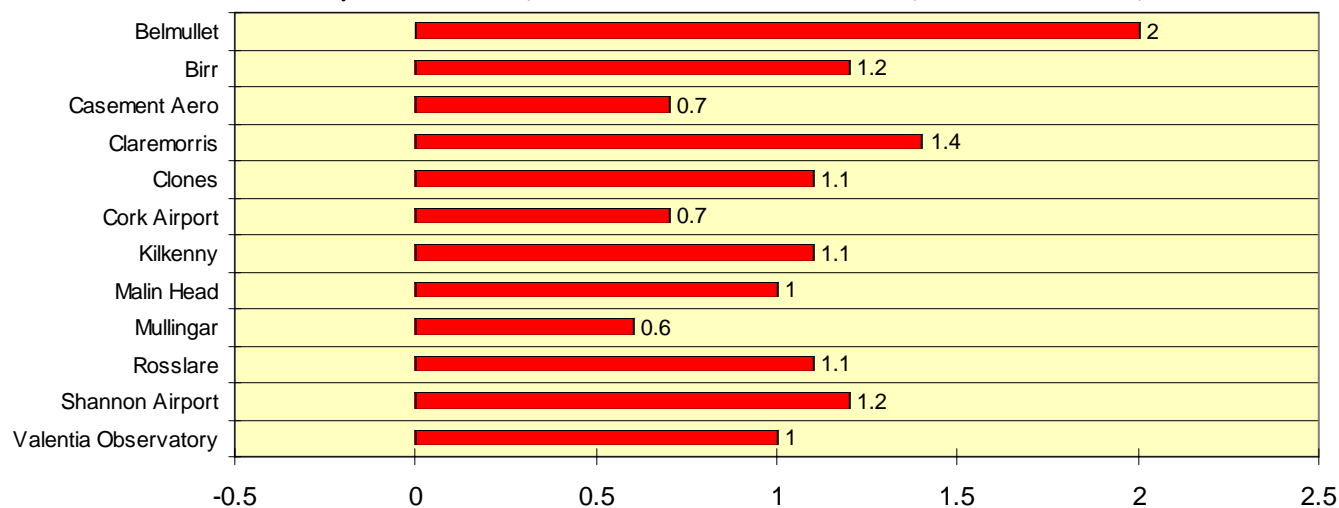
● Valentia Observatory      - Dublin Airport      ■ Clones

# June 2007 Percentage / Difference from 1961-90 monthly normals

## Rainfall (% of normal for period 1961-1990)



## Temperature (°C difference from normal for period 1961-1990)



## Sunshine (% of normal for period 1961-1990)

