



Monthly Weather Summary

The Weather of January 2008

Wet and windy for most of month; mild and mainly dull

Low pressure was the dominant influence on Ireland's weather during most of January, with frequent deep Atlantic depressions passing close to or over the country. Heavy rain and strong winds were recorded on many days, while the predominantly southwesterly airstream kept temperatures above normal for much of the month. Rainfall totals were above normal everywhere and it was a particularly wet month in parts of the south and west. It was the wettest January for between 9 and 20 years in many places, while Shannon Airport's total of 221mm was its highest for January since the station opened in 1945. Between 16 and 25 wetdays (days with 1mm or more rainfall) were measured during the month; most of these were in the period between the 4th and 23rd, when serious flooding developed in parts of the south and west. Mean monthly air temperatures were between one and two degrees higher than normal, despite a spell of relatively cold weather between the 3rd and 8th. There was a total of between 4 and 8 air frosts at inland stations, compared with between 9 and 11 in an average January. Sunshine totals were below normal except in the south and it was the dullest January for between 10 and 12 years at several stations.

1st to 3rd: A very mild southerly airstream covered the country at first, later backing to a much colder easterly direction. This period was mainly dry and cloudy, but there was patchy rain in northern areas at first, while wintry showers developed in eastern areas on the 3rd.

4th to 23rd: A spell of very unsettled weather, as frontal systems brought rain or showers each day. Although individual daily falls were not exceptionally high, rainfall values of between 10 and 25mm were widely recorded on many days. Around 200mm fell within this period in parts of Munster and Connacht, bringing significant river flooding. Thunderstorms were also frequent and they were widespread in southern areas on the 4th and 17th. Falls of sleet or snow were recorded early in the period as temperatures fell below normal, but milder conditions returned from the 12th onwards. There were sunny spells between showers at times, but most of the period was dull. Southwest to westerly winds reached gale force on several days and were particularly strong between the 4th and 9th.

24th to 28th: An anticyclone centred to the southeast of Ireland brought a short spell of quieter weather. Rainfall amounts during this period were small except near the north and northwest coast, while long sunny spells developed in many places on both the 24th and 27th. Temperatures were well above normal in a light to moderate south to southwesterly airstream.

29th to 31st: A cold front moved southeastwards over the country on the 29th, bringing some heavy rain and introducing a much colder westerly airstream, later veering northwesterly. Wintry showers developed in western areas on the 30th and became heavier and more widespread on the 31st.

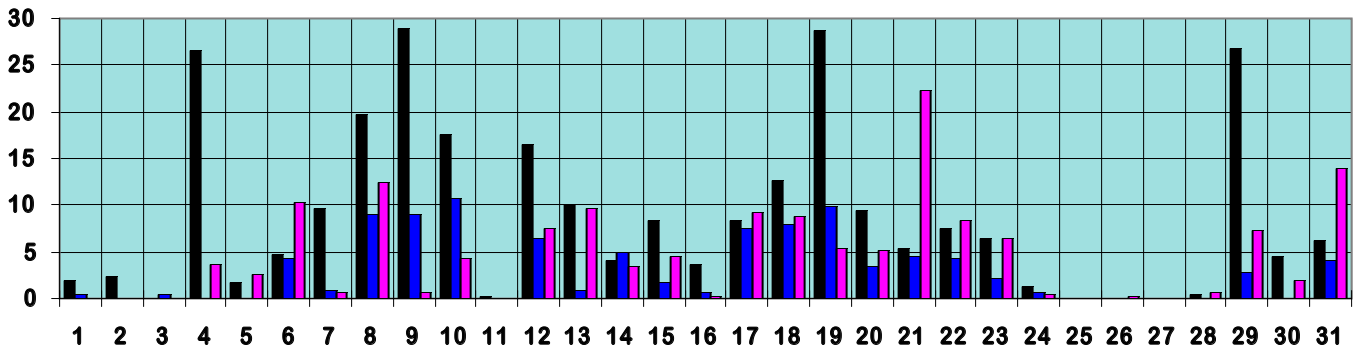
Wind and elements: Mean windspeeds for the month were above normal generally, varying between 8 knots (14km/h) at some inland stations and 18 knots (33km/h) at Malin Head. The highest gust, 91 knots (168km/h), was measured at Malin Head just after midnight on the 9th; this was the highest gust at the station since December 1998 and the highest January gust there since 1968. There was thunderstorm activity, mainly in the south and west, in the periods 3rd to 5th and 7th to 9th and on the 17th, 23rd, 24th and 31st. Hail showers were recorded in the periods 3rd to 10th, 23rd to 24th and 29th to 31st, while snow was recorded between the 3rd and 9th and on the 23rd and 31st. Fog was most widespread on the 4th, 11th/12th and 15th.

Extreme values

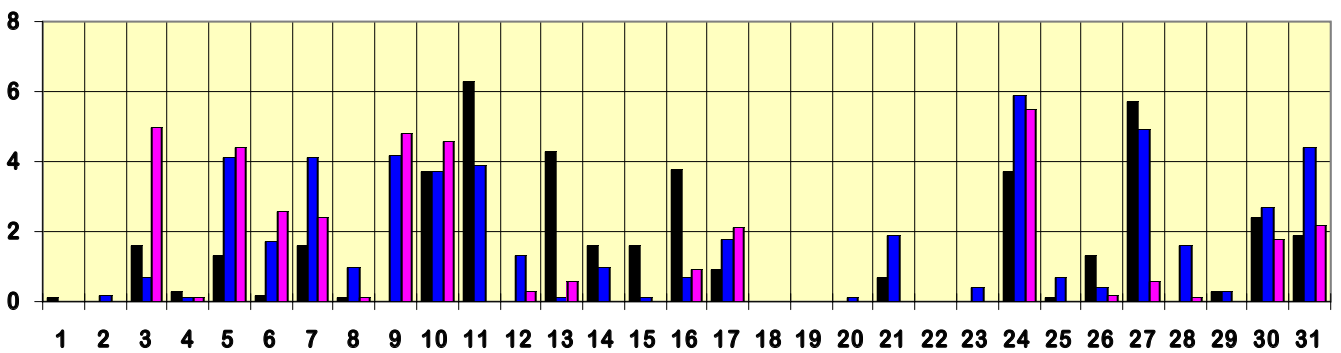
Rainfall	Highest total: 274.0mm at Valentia Observatory (<i>its wettest January since 1974</i>) Lowest total: 97.4mm at Dublin Airport (<i>its wettest January since 1995</i>) Highest daily rainfall: 32.8mm at Malin Head on 21st (<i>its highest January daily value since 1978</i>)
Temperature	Highest mean monthly temperature: 8.7°C at Valentia Observatory (<i>its warmest January since 2002</i>) Lowest mean monthly temperature: 5.0°C at Knock Airport Highest temperature: 14.3°C at Dublin Airport on 23rd (<i>its highest January value since 1998</i>) Lowest air temperature: -6.1°C at Claremorris on 4th (<i>its lowest January value since 2002</i>) Lowest grass minimum temperature: -11.5°C at Birr on 4th
Sunshine	Highest monthly total: 64.1 hours at Rosslare Lowest monthly total: 25.8 hours at Malin Head (<i>its dullest January since 1996</i>) Highest daily sunshine: 7.6 hours at Kilkenny on 27th

January 2008 Daily values at selected synoptic stations

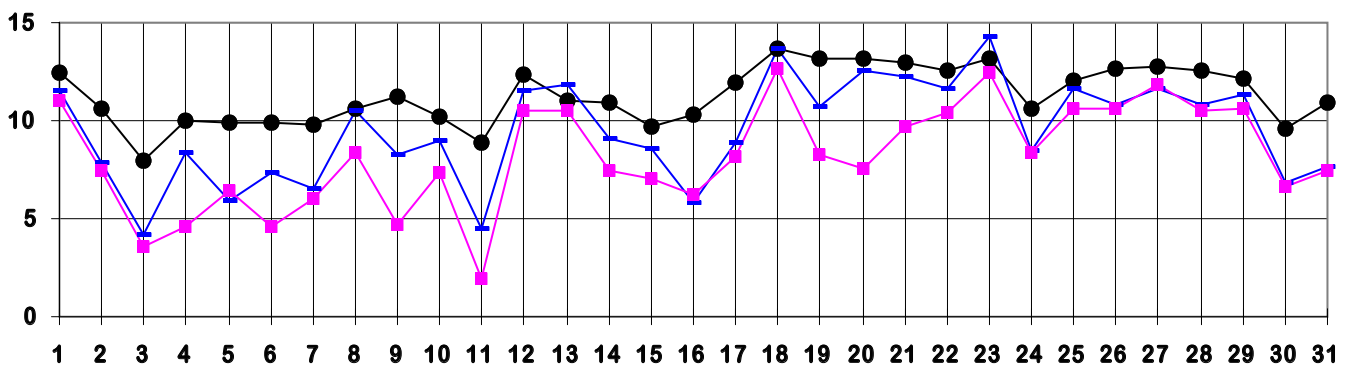
Rainfall (mm)



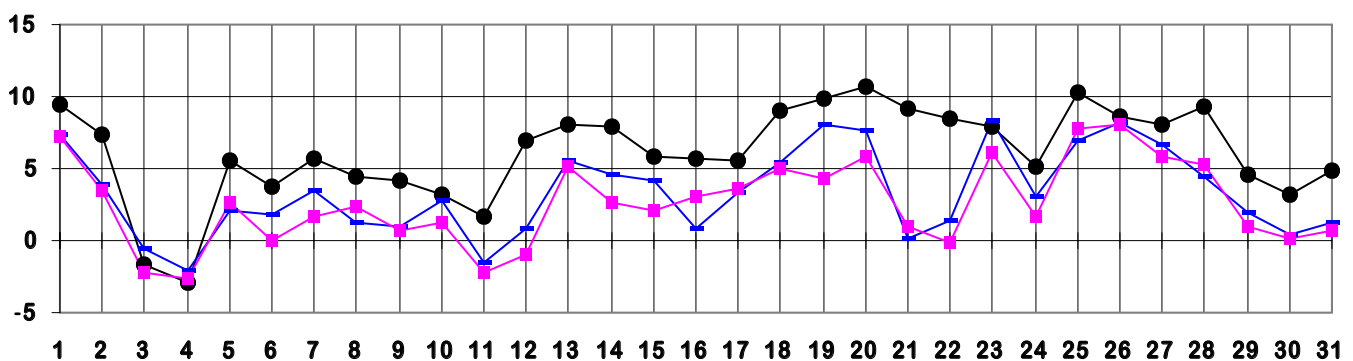
Sunshine (hours)



Maximum temperature (°C)



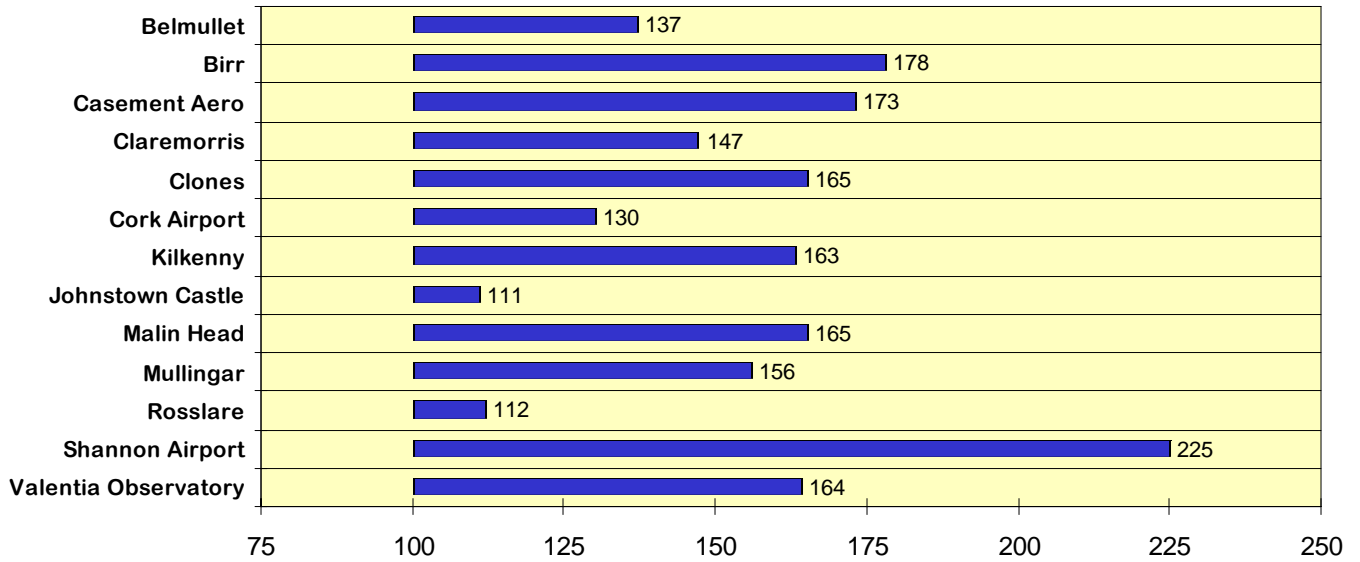
Minimum temperature (°C)



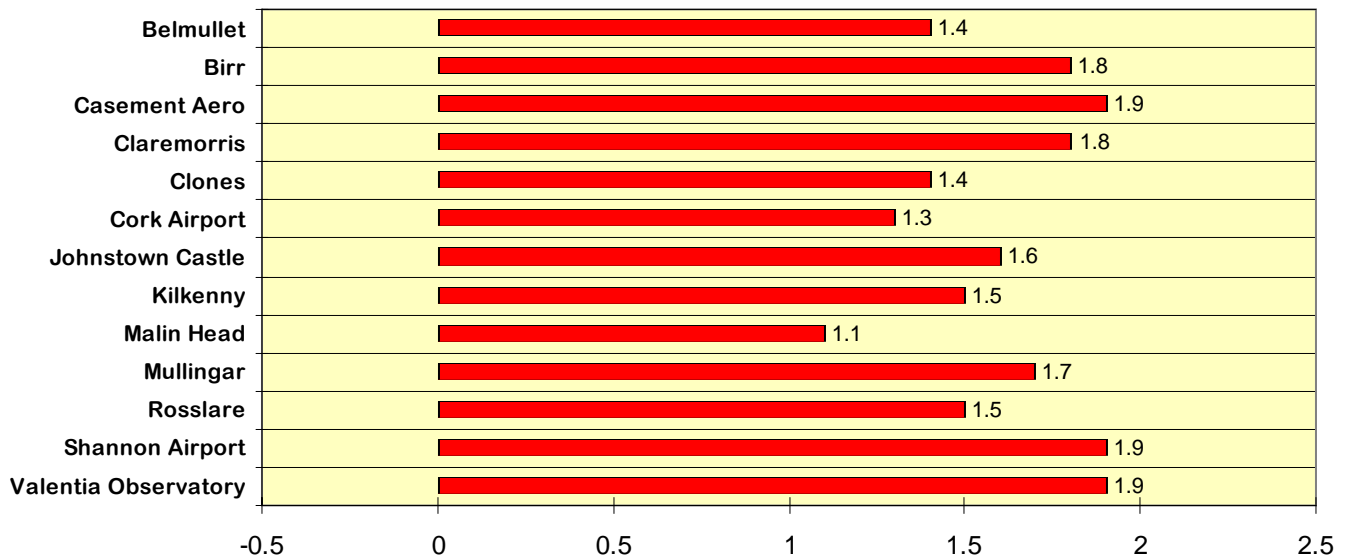
● Valentia Observatory - Dublin Airport ■ Clones

January 2008 Percentage / Difference from 1961-90 monthly normals

Rainfall (% of normal for period 1961-1990)



Temperature (°C difference from normal for period 1961-1990)



Sunshine (% of normal for period 1961-1990)

